



Sonshine Preschool

Parma Heights Baptist Church
8971 West Ridgewood Drive
Parma Heights, Ohio 44130
440-886-7485

Dave Griffey, Minister of Christian Schools
Lois Griffin, Administrator

Newsletter
February 2012

Upcoming Important Dates

PHCA Open Houses
February 4

Valentines Parties
February 14 & 15

MOM to MOM
February 17

President's Day—No School
February 20

PHCA Kindergarten Testing
Monday, March 5

Parent/Teacher Conferences (no class)
March 15 & 16

MOM to MOM
March 23

Topsy Turvy Tuesday & Wacky Wednesday
March 20 & 21

Good Friday
April 6

Easter Break
April 6-15

Class Pictures
April 18 & 19

MOM To MOM
April 20

Zoo Day
May 7

Summer Birthdays
May 3 & 4

Closing Programs
May 22 & 23

Just for You

This month we will observe two special days: Valentine's Day and President's Day. On February 20, we remember the deeds of two legendary American Presidents—George Washington and Abraham Lincoln. These men helped to shape our government and give us the many freedoms that we have come to enjoy.

On February 14, we will share Valentines with those who are close to us. On this day, remember the importance of God's everlasting love and sacrifice that He made by giving His one and only Son, Jesus. Because of His love, we can have eternal life. Praise God for His perfect love!

From all of us at Sonshine Preschool, we extend Valentine wishes to you and hope that you enjoy a relaxing President's Day with your child.

- Your Sonshine Preschool Staff

Parent-Teacher Conferences Coming Soon!

For your convenience, Sonshine Preschool has set aside March 15 and 16 for Parent-Teacher Conferences. Conferences will be scheduled at 10-minute intervals to review your student's progress. A sign-up sheet will be posted on each classroom door the week prior to the conferences to choose a time slot convenient to you. Any conferences not able to be scheduled during these times will be done by phone or scheduled after classes another day. Each parent will have a conference. The Afternoon class will also do their Conferences in the **morning** in the Parlor with Mrs. Lessing and **will not** have class in the Afternoon. There will be **no school** on Conference days for your student, but extra teachers not in conference will attend to your preschooler **and** younger siblings while you meet with your student's teacher.

MOM TO MOM

Come join us for Mom to Mom on Friday, February 17 from 9:30am to 11:30am in the Parlor. We will have Brenda Acker speaking about the importance of "Manners" with children. Free childcare is provided in Room B3. For more information, contact Laura Vallee at 440-845-1384. Future dates for Mom to Mom are March 23, April 20 and May 18.



Check out our new Sonshine Preschool web page: Go to www.phbaptist.org

Click on the "Ministries" link, then click on "Sonshine Preschool"

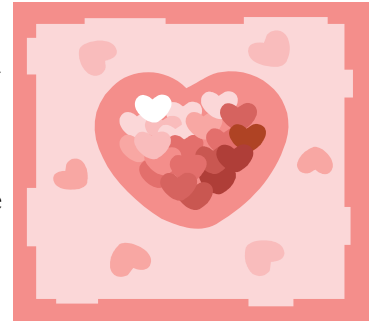
Class Pictures



Please note that class pictures will be taken on Wednesday, April 18 and Thursday, April 19. Pictures must be prepaid. An envelope will be sent home with your student one week prior to picture day. The envelope together with payment must be returned on picture day. Please make checks payable to **Campus Photo**.

Valentine Parties Planned

We will have our Valentine Parties in school on Tuesday, February 14 and Wednesday, February 15. Each child will need to bring a Valentine for every child in his or her class. Check with your child's teacher for the number of cards needed. The 5-Day Class will have their party on Tuesday, February 14. Each card is to be signed with your child's name on the inside and left BLANK on the outside envelope. We are making Valentine containers in class so you do not need to make one at home. Be sure to check with the teacher should you desire to bring a Valentine treat or take home treat.



Do You Need Prayer?

Who of us doesn't? Did you know that your Sonshine Preschool Staff gathers each morning before classes begin to share a special devotion or verse from God's Word and pray? We feel so privileged to lift up each of our students and their families. It also allows us to share each others burdens so we can be encouraged as well. The Bible says "Where 2 or 3 are gathered in My name, I am there with them." If you have a special prayer request or something going on in your child's life or the lives of your family members, feel free to share it with Mrs. Griffin or one of the teachers so that we can lift your concerns up to the Lord and wait patiently for His answer. Everything that is prayed during our devotion time, stays in devotion time. God is waiting to hear from you too! Thank you again for entrusting your children to our preschool.

Preschool Enrollment

We always appreciate all the new students who enroll because of referrals from you, our Preschool families. We trust that we continue to provide the best in Preschool education in addition to the love of Christ and our teachers that we share with you. We are blessed that you are here and hope you will share our program with your friends.

Sonshine Preschool 2012-2013 Tuition Information

Preschool tuition is a yearly amount divided into 9 installments for your convenience. The first tuition payment is due upon receipt of the open house letter in August and may be mailed or dropped off. The second tuition payment is due the first week of school in September, 2012. Monthly payments are due one month in advance, the first class day of each month.

Tuition Installment amounts are as follows (for 2012-2013):

5-DAY	\$185.00
MWF	\$118.00
T-TH	\$88.00
T-TH PM	\$77.00

* There is a 5% discount available for those families who wish to pay the full year's tuition by August 31.